

Letter-word-picture - Letter group 3

Cut the cards. Match letter-word-picture.

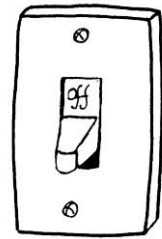
g

goat



o

off



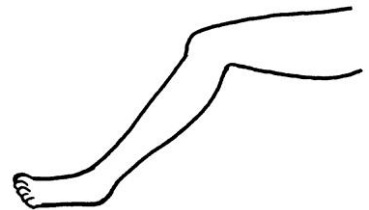
u

up



l

leg



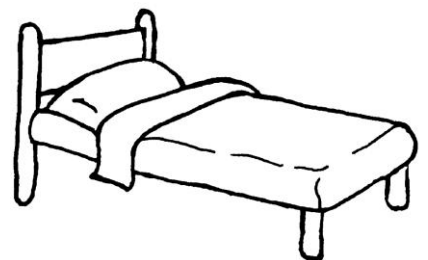
f

fan



b

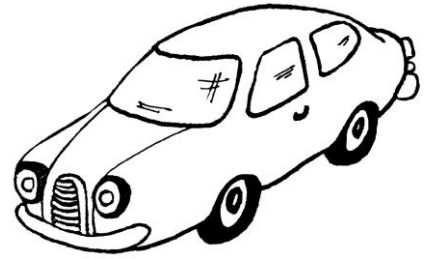
bed



c

-----

car



e

-----

egg



h

-----

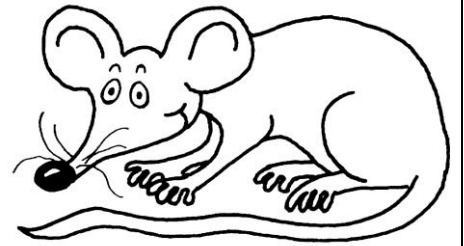
hat



r

-----

rat



m

-----

mat



d

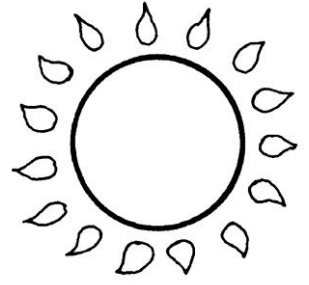
-----

dog



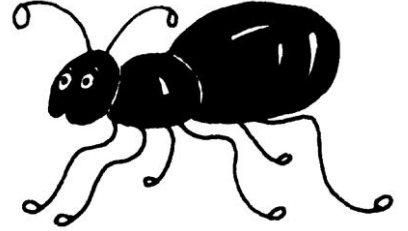
s

sun



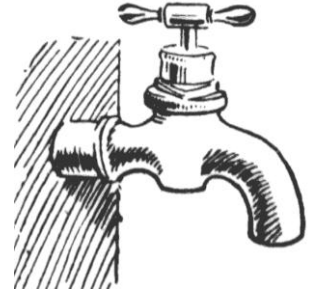
a

ant



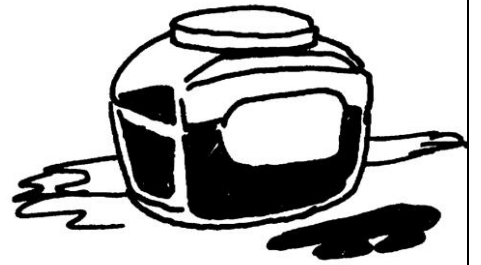
t

tap



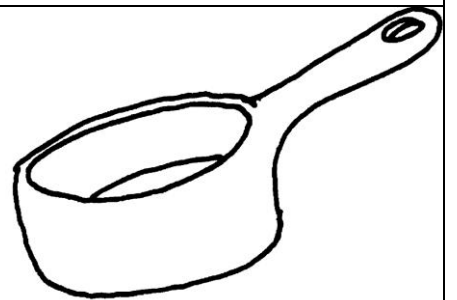
i

ink



p

pan



n

net

